



## Apartments 1-5 Riverside Lodge, 22 Wilford Lane, West Bridgford, NG2 7QX

A recently built block of five flats in popular West Bridgford close to the River Trent. The block consists of 4 x 2 bed apartments on the ground and first floors. Occupying the entire top floor is a two-bedroom penthouse apartment with two bedrooms and two bathrooms and a lovely open plan kitchen diner and living space that enjoys lovely river views. There are 5 x off street parking spaces to the rear of the block. The 2 x ground floor apartments have private terraces. Gas central heating and double glazing. The freehold of the building is offered for sale to include the five apartments all on one title. Rare Opportunity to acquire a new build investment block in sought after West Bridgford.

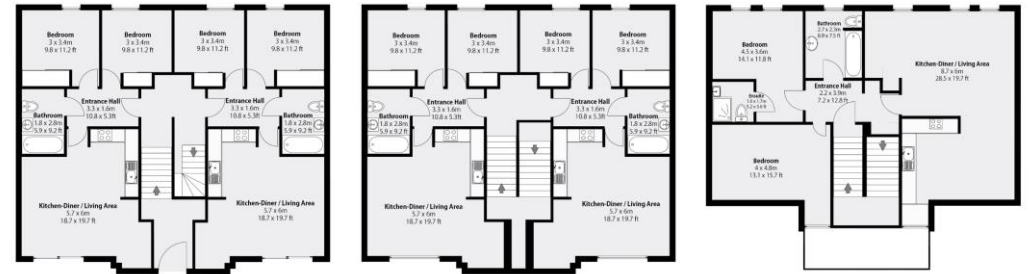
### Accommodation & Amenities

- A New Build Block of 5 x Luxury Apartments
- 2 x Ground Floor 2 Beds with Terrace
- 2 X First Floor 2 Beds
- 1 X 2 Bed, 2 Bath Penthouse with River Views
- 5 x Allocated Off Street Parking Spaces
- Highly Desirable West Bridgford Location
- Gas Central Heating & Double Glazing

Current Rents -

Apartment 1 (643sq.ft) - £995pcm  
Apartment 2 (665sq.ft) - £950pcm  
Apartment 3 (631sq.ft) - £900pcm  
Apartment 4 (622sq.ft) - £950pcm  
Apartment 5 (839sq.ft) - £1050pcm

Larger Version Back Page



Total Combined Area: 390.8m<sup>2</sup> | 4206.5 Sq Ft.

Whilst every attempt has been made to ensure the accuracy of the floorplan, measurements of doors, windows, rooms and any other items are approximate and no responsibility is taken for any error, omission or mis-statement. This plan is for illustrative purposes only and should be used as such by any prospective purchaser.















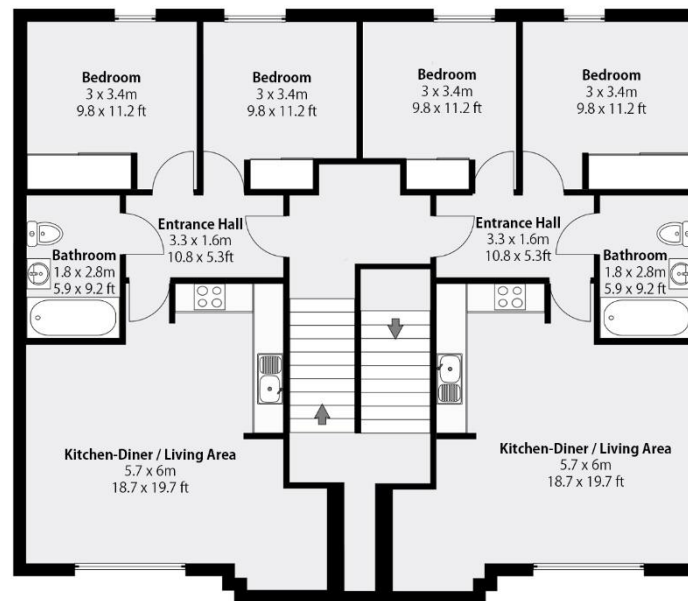
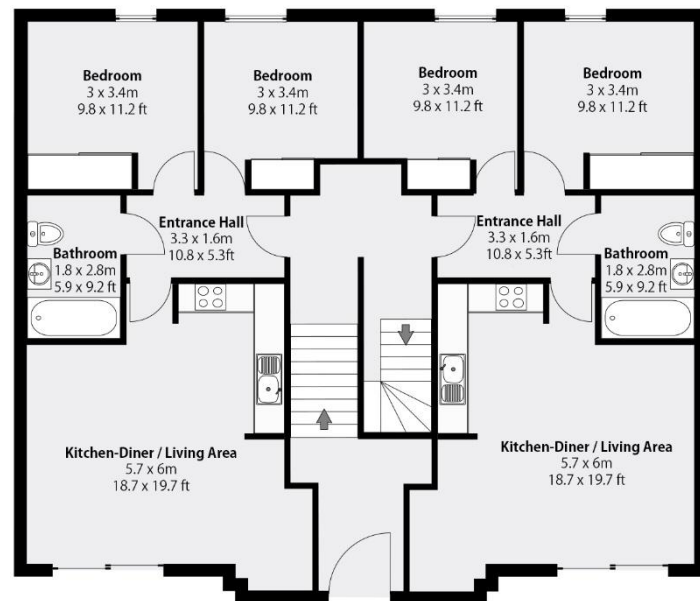












**Total Combined Area: 390.8m<sup>2</sup> | 4206.5 Sq Ft.**

Whilst every attempt has been made to ensure the accuracy of the floorplan, measurements of doors, windows, rooms and any other items are approximate and no responsibility is taken for any error, omission or mis-statement. This plan is for illustrative purposes only and should be used as such by any prospective purchaser.